



## OVERVIEW AND ACCEPTANCE

Digital-first and student-focused, the DET is available online and on-demand so students can certify their English proficiency from anywhere—no appointments or traveling to test centers needed. Tests are recorded and asynchronously proctored, and certified results are available within 48 hours. Certified results are free to send to any of our 6,000+ accepting programs.



95% of top-100 ranked  
UG universities



96% of the top-25 UG universities  
enrolling the most int'l students



Hundreds of top graduate  
programs



3600+



450+



250+



200+

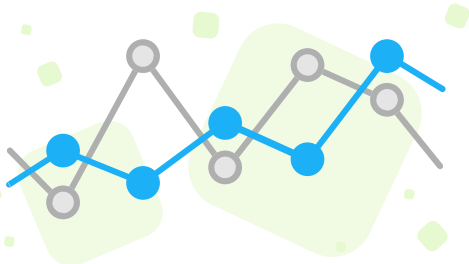


80+

## TEST PURPOSE

The DET is utilized by institutions to inform decisions regarding academic admissions and/or placing students in courses or language programs by measuring reading, writing, speaking, and listening skills.

**Standards** - The DET is aligned to the Standards for Education and Psychological Testing (AERA, APA, and NCME, 2014) as well as the Common European Framework of Reference for Languages (CEFR).



## TEST SCORING

**Scores** - The DET is scored on a 10-160 scale with 5-point increments. Two sets of subscores are reported: Individual Subcores and Integrated Subcores. The Individual Subcores reflect candidates' language skills across four areas: Speaking, Writing, Reading, and Listening. The Integrated Subcores (Literacy, Conversation, Comprehension, Production) describe language use in real-life settings.

**Concordance** - The Duolingo English Test scores are aligned to those of TOEFL iBT®, IELTS® Academic, and the Common European Framework of Reference (CEFR). This alignment, known as concordance, is available on [this section of DET's website](#).

## TEST DEVELOPMENT

**Item types** - The DET has 14 different graded task types that collectively measure test-taker proficiency in the English-language constructs. The task types include both closed-ended task types (e.g., C-test and Yes/No Vocabulary) and open-ended task types (e.g., Picture Description and Writing Sample). Many of these tasks are integrative, requiring the test taker to demonstrate proficiency with multiple skills, for example Interactive Listening (listening and writing).

**Item fairness** - All AI-generated DET test items go through a sensitivity review. Each item is judged by two or three expert human reviewers to ensure items are fair towards test takers of diverse identities and backgrounds (e.g., cultural, socioeconomic, gender), do not require specialized knowledge or contain potentially offensive or distracting content. Additional research indicates no statistical bias among different groups of test takers.



## TEST ADMINISTRATION



**Computer Adaptive Administration (CAT)** - The DET is designed to be efficient; the test takes approximately one hour to complete. CAT administration gives items to test takers conditional on their estimated English language ability and provides uniformly precise scores for test takers when compared to fixed-form tests.

**Onboarding and Administration Rules** - Test takers access the test via the [applicants page](#) and complete the test from their computer with a webcam in a quiet, well-lit room via the Duolingo English Test [desktop app](#). A comprehensive onboarding process includes: system review, test rules, and ID upload all in the test taker's chosen interface language to ensure comprehension. The following signals are recorded throughout the whole test session: webcam video, screen view, microphone audio, keyboard and mouse use.

**Proctoring** - After each test has been completed and uploaded, its recording undergoes a thorough review by at least one human proctor with TESOL/applied linguistics expertise, which is supplemented by AI to call human proctors' attention to suspicious behavior.

**Results** - Certified test results are made available within 48 hours of test completion, and test takers select an unlimited number of institutions to which they'd like to send their results at no additional cost.

**Institutional Review** - Accepting institutions receive an email notification and results can be accessed on a dashboard or the institution's CRM. Each certified result includes a proficiency score, subscores, and a speaking and writing sample.

## TEST VALIDITY AND RELIABILITY

**Concurrent validity** - Research shows the DET is substantially correlated with other popular English tests, indicating that the DET construct is aligned with TOEFL iBT and IELTS Academic as well as they are with each other.

**Predictive Validity** - DET scores are significantly and strongly associated with how university professors, staff, and students evaluate test-takers' suitability for academic study (Isbell et al., 2023). Internal predictive validity meta-analysis results also show that students accepted with DET scores perform as well academically as IELTS iBT or TOEFL Academic students.

**DET Automated Scoring** - Performance of DET automated scoring engines has been compared with human expert scores using CEFR-based rubrics. There is a strong alignment between scores assigned by DET's machine scoring algorithms and human language assessment experts (Pearson  $r > 0.8$ ).

**Reliability** - The reliability of a test score is an indicator of the extent to which one score that a test taker achieves can be trusted to be consistent if the test were taken again. Evaluating via measures of internal consistency reliability measures and standard error of measurement (Total SEM = 4.96) and test-retest (Total test-retest = 0.94) indicate a high degree of confidence in the reliability of the test.

## TEST SECURITY



**Asynchronous and Remote Proctoring** - DET online proctoring employs advanced technology, including AI, to monitor test takers remotely. Human proctors review test sessions asynchronously and remotely, and are anonymous to test takers and to one another.

**Adaptive and Discrete** - Each test session is adaptive and discrete to each test taker, so one person's attempt at cheating can't invalidate another person's score—unlike traditional testing centers.

**Recorded** - Because each session is recorded, there's more evidence available to determine whether or not cheating occurred—evidence that can be observed and reviewed by multiple, anonymous proctors.

## GET IN TOUCH

- Want to start accepting results? Visit [go.duolingo.com/accept](https://go.duolingo.com/accept)
- Have questions? Email [institutional@duolingo.com](mailto:institutional@duolingo.com)

